

Lenovo® recommends Windows.

lenovo® **FOR**
THOSE
WHO DO.™

THINKPAD® HELIX

COMPUTING WITHOUT COMPROMISE.**A LAPTOP. A TABLET. 2-IN-1 CONVENIENCE WITH POWERFUL PERFORMANCE.**

Laptop Mode



Stand Mode



Tent Mode



Tablet Mode



Desktop Mode

Office anywhere! 5-usage modes give you the most versatile 2-in-1 laptop you can imagine.

Stay productive on your terms with ThinkPad® Helix – a truly versatile 2-in-1 laptop engineered to adapt to where and how business professionals work. It's a laptop that delivers a full PC experience, but it's also an ultraportable ultrabook with detachable keyboard. It's computing without compromise – the latest Intel® Core M processors, 12-hours of battery life, powerful security and much, much more.

**WHY BUY
THE
THINKPAD®
HELIX?**

1 UNPARALLELED VERSATILITY



2-in-1 means it's a full-featured ultraportable laptop and a super-convenient tablet, but you can take advantage of 5 convenient usage modes – tent, laptop, tablet, stand and desktop.

2 DURABILITY AND SECURITY



Advanced engineering, robust materials, and a keyboard with no moving parts make this a truly durable everyday performer for even the most demanding business use.

3 WORLD-CLASS BATTERY LIFE



No compromise means no stopping to recharge! The battery lasts 12+ hours without a recharge, so it goes as long as you do.

4 PRIMED FOR BUSINESS



This laptop is ready to do business with the latest Intel CPUs, Windows 8.1 and comprehensive connectivity, convenient Digitizer Pen, security features like Fingerprint reader and optional SmartCard.

**WHO
NEEDS THE
THINKPAD®
HELIX?**

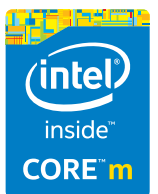
1 Business people on the go who need a premium laptop with the flexibility to adapt to their productivity needs (with tent, laptop, tablet, stand and desktop modes).

2 Executives who want a powerful business laptop that performs as well in the office as it does on the go or at home.

3 Corporate executives who need an ideal combination of mobility, performance, and security, with a full range of features and accessories to optimize ROI.

4 Prosumers and students who want a premium convertible they can use anywhere in any mode, for both work and entertainment.

5 Anyone who appreciates a premium laptop with features like FHD display, elegant design and accessories like the Lenovo® Pro Keyboard.



Lenovo® recommends Windows.

lenovo® **FOR**
THOSE
WHO DO.™

SPECIFICATIONS

PERFORMANCE

Processor

Intel® Core™ M and Intel Core M vPro

Operating System

Windows 8.1
Windows 8.1 Pro

Graphics

Intel® HD 4000

Memory

4GB, 8GB DDR3L (1333 MHz)

Camera

2MP 1080p / 5MP

Storage

128GB, 256GB,

Audio

Dolby® Home Theater™ v4, Stereo Speakers,
Digital Microphone

Battery¹

Tablet: 8 hrs / 35 Whr

With Keyboard Dock: 12 hrs / with 26 Whr

DESIGN

Display

11.6" 16:9 FHD (1920 x 1080) IPS 400 nit

Dimensions

Tablet:

11.85" x 7.57" x 0.37"
(301.1 mm x 192.5 mm x 9.6 mm)

Tablet & Ultrabook Keyboard:

11.85" x 8.49" x 1"
(301 mm x 215.7 mm x 25.4 mm)

Tablet & Ultrabook Pro Keyboard:

11.85" x 8.39" x 0.79"
(301.1 mm x 213.3 mm x 20.2 mm)

Weight

Tablet:

Starting 795g (1.75 lbs)

Ultrabook Keyboard:

560 g (1.23 lbs)

Ultrabook Pro Keyboard:

900 g (1.98 lbs)

Keyboard

Ultrabook keyboard,
Ultrabook Pro keyboard

CONNECTIVITY

I/O Ports

Tablet:

Micro HDMI, USB3.0, micro SD, micro SIM

With Ultrabook Keyboard²:

USB 2.0

With Ultrabook Pro Keyboard²:

USB 3.0, mDP

Communication

Bluetooth®², 802.11 a/c
4G LTE

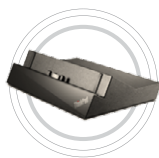
SOFTWARE

Lenovo® DOit Apps

- SHAREit
- SECUREit
- SYNCit
- SNAPit
- SEEit

¹ Battery life (and recharge times) will vary based on many factors including system settings and usage. A description of the environment under which the test was performed is available upon request.
² Optional.
³ Tablet only.

ACCESSORIES



ThinkPad®
Tablet Dock



ThinkPad®
Quickshot
Cover



Anti-glare
and
Privacy filter



ThinkPad®
Helix
Protector



ThinkPad®
Digitizer Pen



Recommended accessory - power
and dock your Laptop with one cable.

LENOVO SERVICES

Lenovo® offers a comprehensive portfolio of services to support and protect your ThinkPad® investment. Succeed with substance and let Lenovo's Service support you all the way.

PRIORITY TECHNICAL SUPPORT*

Makes your priority, our priority. 24x7 priority call routing to advanced-level technicians, electronic incident tracking and escalation management services.

WARRANTY EXTENSIONS

(1-TO-4 YEARS TOTAL DURATION)

This fixed-term, fixed-cost service helps accurately budget for PC expenses, protect your valuable investment and lower the cost of ownership over time.

ACCIDENTAL DAMAGE PROTECTION

Avoid the hassles of unexpected repair costs. Provides coverage for non-warranted damage incurred under normal operating conditions, such as minor spills, drops or damage to the integrated screen.

ASSET TAGGING

Systems come equipped with a professional, flexible asset tag based on your exact specifications. PCs are easily identifiable and trackable right out of the box.

WHY THINKPAD®?

- 1 Engineered to endure** – Premium materials and layers of reinforcements protect your data even in extreme conditions.
- 2 The gold standard in reliability, since 1992** – Superior cooling, spill resistance and dust protection guard against system failure.
- 3 Thoughtful design inspired by you** – Every small detail is researched and crafted by our engineers for an enhanced user experience.
- 4 Award-winning ergonomic keyboard** – Precision keyboard design for better typing comfort and accuracy.
- 5 A new level in mobility** – Stylish multimode convertibles, tablets, ultra-mobile ultrabooks, performance laptops, mobile workstations: there's a ThinkPad® for every need.

* Not available in all regions

www.lenovopartner network.com
www.lenovopartner network.com/ca

©2014 Lenovo. All rights reserved.

Availability: Offers, prices, specifications and availability may change without notice. Lenovo is not responsible for photographic or typographic errors. **Warranty:** For a copy of applicable warranties, **write to:** Warranty Information, 500 Park Offices Drive, RTP, NC, 27709, Attn: Dept. ZPFA/B600. Lenovo makes no representation or warranty regarding third-party products or services. **Trademarks:** Lenovo, the Lenovo logo, Rescue and Recovery, ThinkStation, ThinkVantage and ThinkVision are trademarks or registered trademarks of Lenovo. Microsoft, Windows and Vista are registered trademarks of Microsoft Corporation. Intel, the Intel logo, Intel Atom and Intel Atom Inside are trademarks of Intel Corporation in the U.S. and/or other countries. Other company, product and service names may be trademarks or service marks of others. **Visit Lenovo.com/safecomputing** periodically for the latest information on safe and effective computing.

